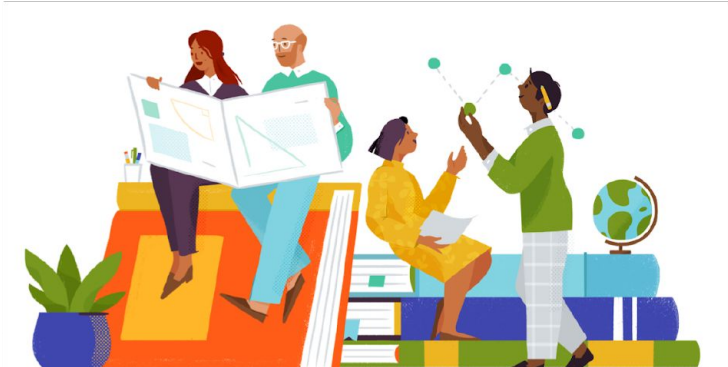


Reliable Events Pipeline





No data, No problem!!!

-Jackson Argo, Slack



No data, No problem!!!

-Jackson Argo, Slack



Partial data, Big problem!!!

-Ananth Packkildurai, Slack

About Slack



Public launch: 2014



**1500+ employees across 10 offices in
7 countries worldwide**

HQ in San Francisco



Diverse set of industries

including software/technology, retail, media,
telecom and professional services.

Slack Stats

10M

Daily Active
Users

85k

Paying Customers
on Slack

65

Fortune 100
Customers

150

Expanded to 150+
Countries

1500

Apps in the Slack
Directory

Events

“An event is a single occurrence within an environment, usually involving an attempted state change.”

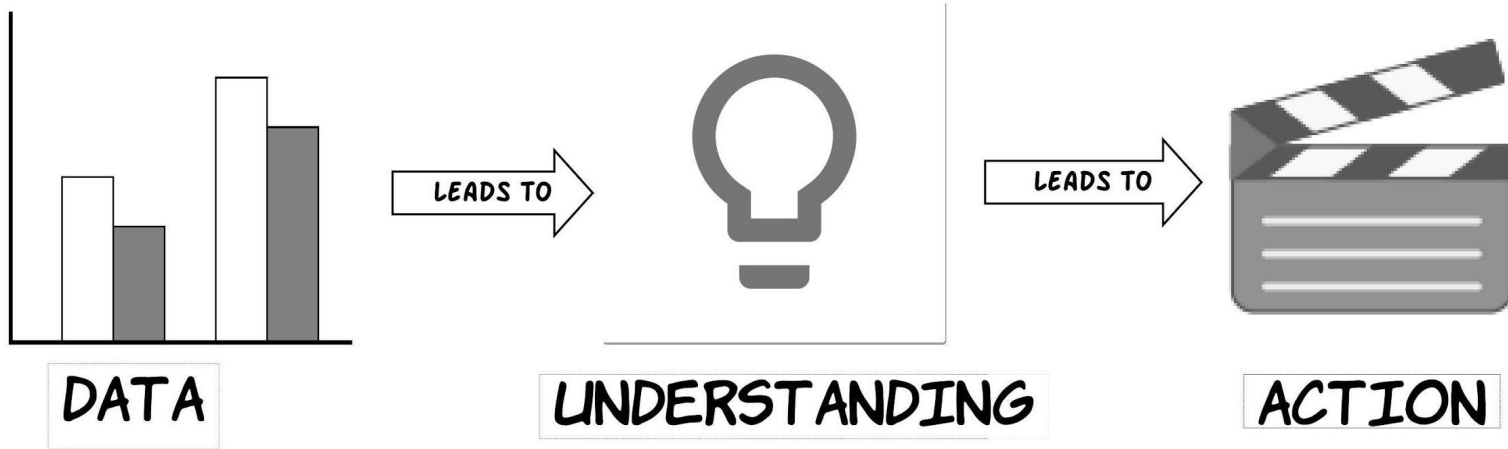


Logs

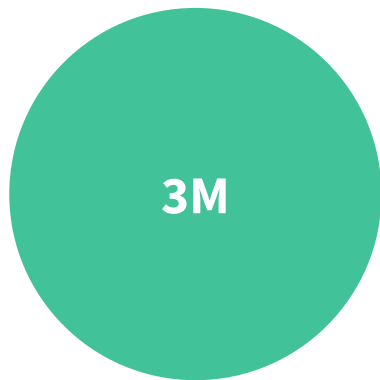
“A log is a collection of event records”



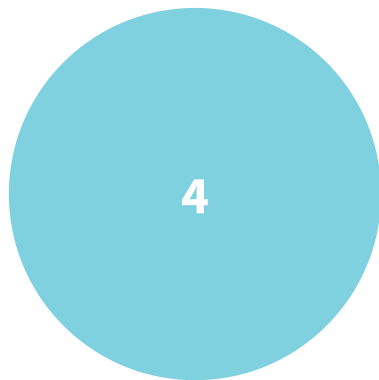
Data Decisions



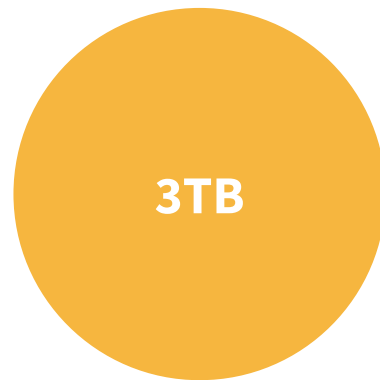
Logs @ Slack



Events per second



Kafka clusters



Per hour

Billing Metrics

[Slack Help Center](#) > [Workspace Administration](#) > [Manage billing, payments & plans](#)

Fair Billing Policy

We believe you should only have to pay for members that are actively using Slack, so we offer a **Fair Billing Policy**.

The short version

- ✔ You'll only be charged for members that are active on the day that you upgrade to a paid plan.
- ✔ If all members become inactive, you will be charged for a minimum of one member, unless you decide to downgrade to the Free plan.
- ✔ Any changes to the number of active members will be reflected in your monthly statement.

Service Quality Metrics



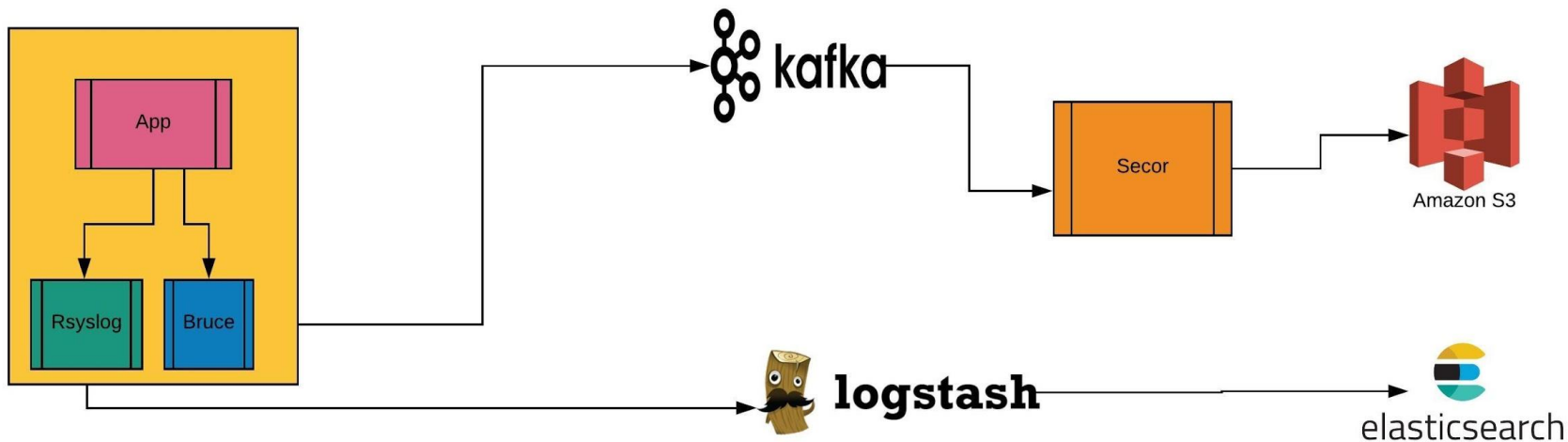
[Dashboard](#) [History](#) [Twitter](#)



Slack is up and running

Having trouble? [Troubleshoot connection issues](#) or email us
at feedback@slack.com.

How did we start?



Is it reliable?

#escal-visibility^{cc} – Apr 20th, 2017



Paul Lloyd 11:38 AM

but who knows, maybe bruce is losing messages and I/we don't know it? I guess I'll wait for smitty when he gets in.

REP Characteristics

Trust in Logs

REP Characteristics

Trust in Logs

High Availability

REP Characteristics

Trust in Logs

Low Latency

High Availability

REP Characteristics

Trust in Logs

Low Latency

High Availability

Efficient

REP Characteristics

Trust in Logs

Low Latency

High Availability

Efficient

Murron Protocol

Timestamp	host	type	offset	pid	message	signature	tags
-----------	------	------	--------	-----	---------	-----------	------

UID

Timestamp	host	type	offset	pid	message	signature	tags
-----------	------	------	--------	-----	---------	-----------	------



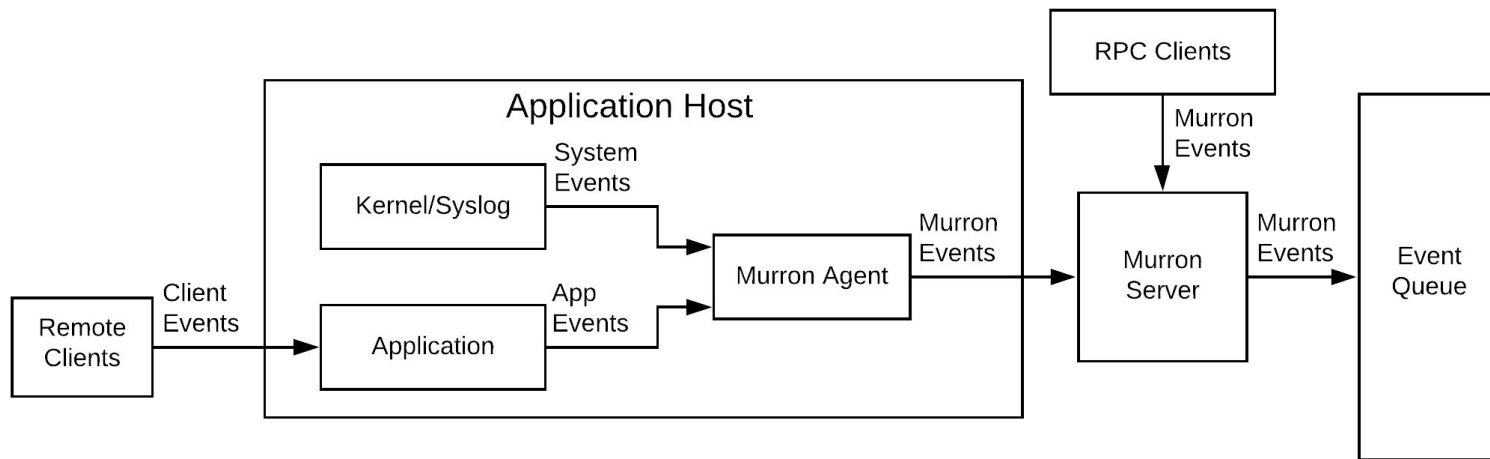
Unique
identifier

Message Signature

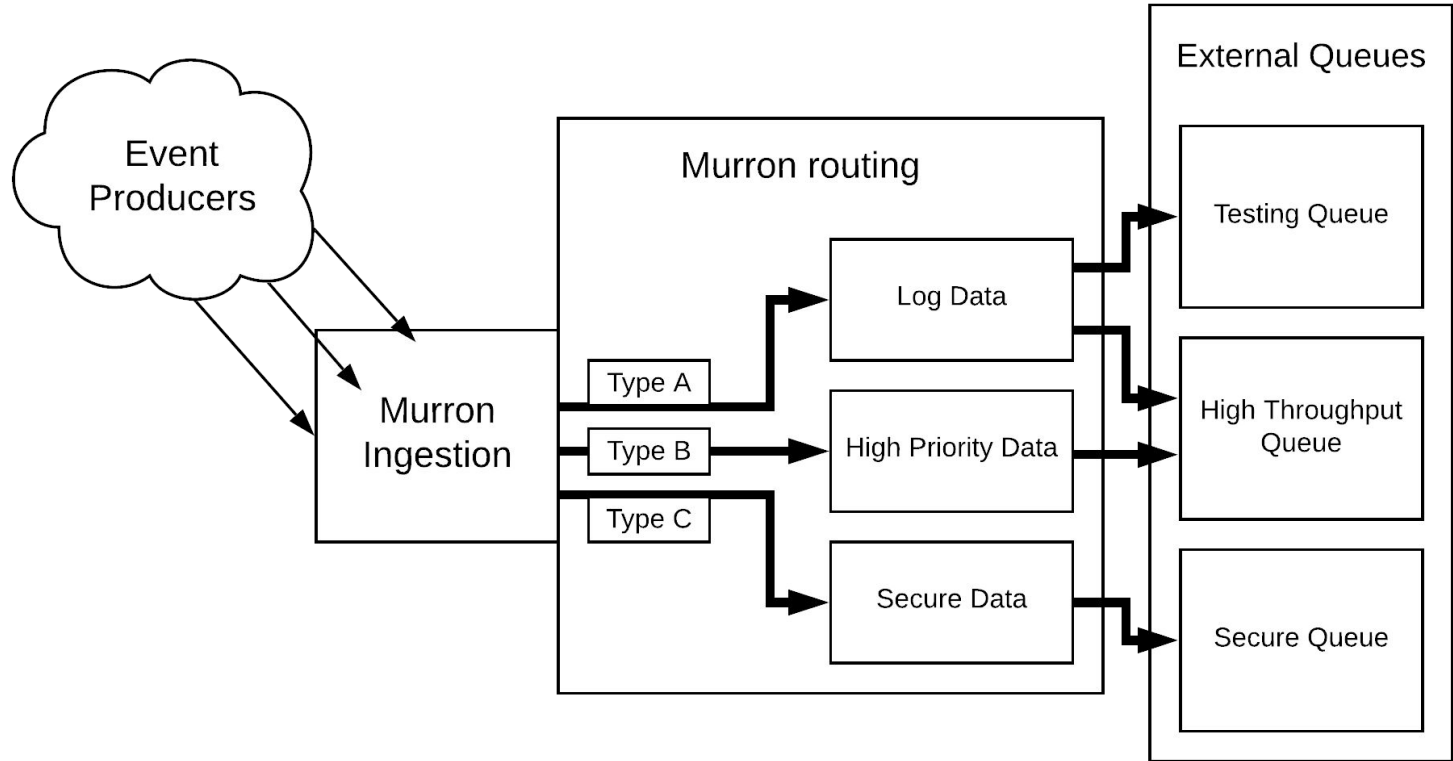


Secure
Payload

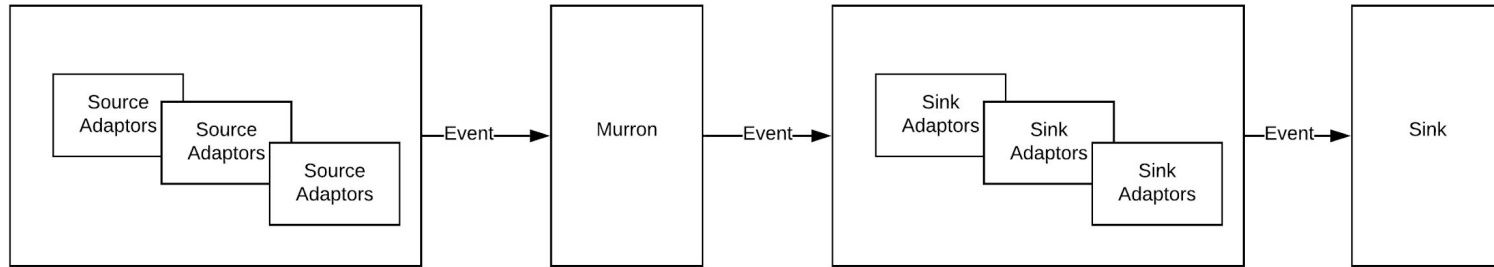
Murron Event Sourcing As a Service



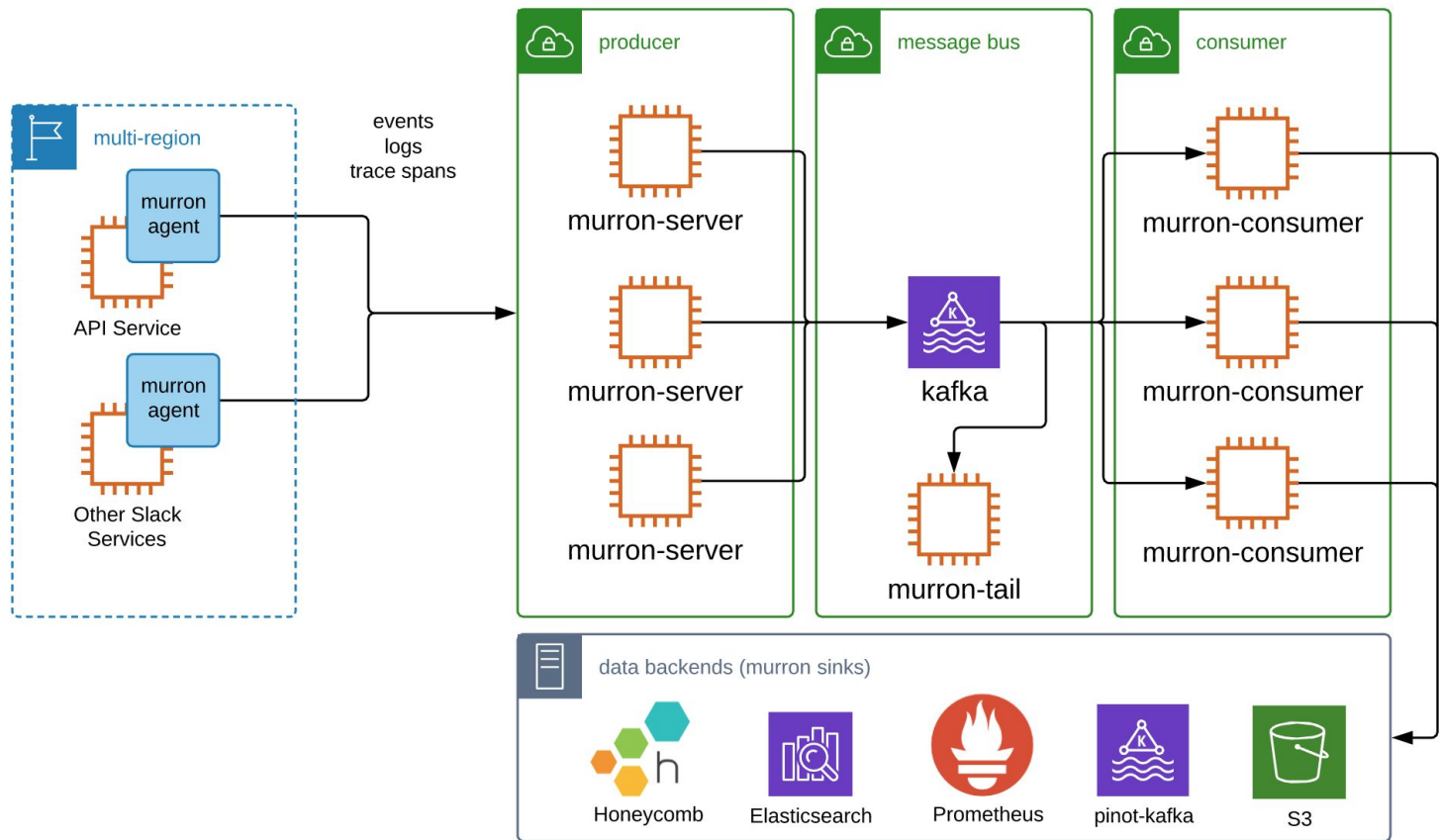
Murron Routing Protocol



Murron Adaptors



Murron Architecture



Log reliability

Murron REP Monitoring by adurai

 Refresh  Edit

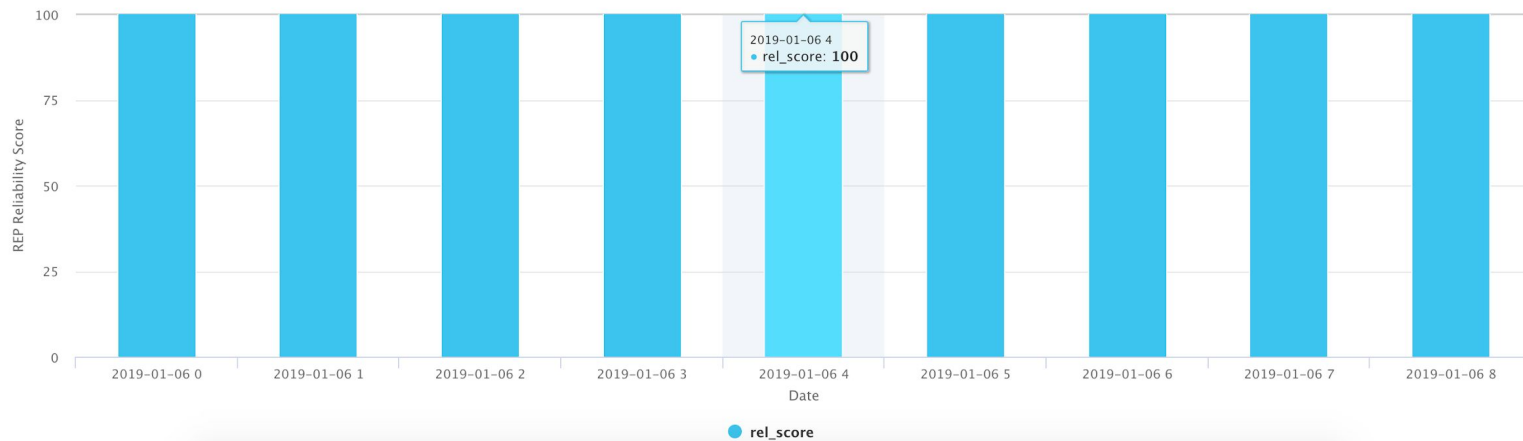
Date Selector

2019-01-06

Choose your start date



Series



Log reliability



Ananth Packkildurai 2:26 PM



Murron Reliability Index score (for slogs now):

Murron uses the cluster of the `host, pid, offset and topic` as the `UUID` for a given message. Murron reliability score finds the correlation between how many events we got vs. events we missed.

Calculation:

```
REP reliability score = ((Total messages - total missing sequence)/ total messages) * 100
```

Dashboard:

<https://analytics.tinspeck.com/v2/dashboard/447004703382>

×

adurai

Murron REP Monitoring

Oct 1st, 2018



3



2



1



2



2



2



7 replies

Last reply 4 months ago



Jackson Argo 🤖 2:28 PM

replied to a thread: **Murron Reliability Index score (for slogs now):...**

I'm seeing 100% across the board. 😊



2



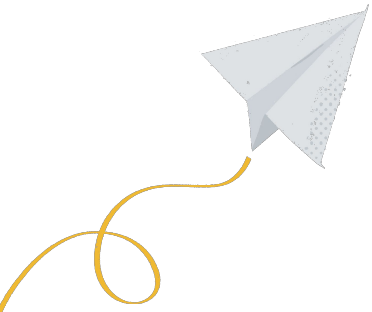
1



2

[View newer replies](#)

What is next?



Murron DAB (Direct Acyclic Blueprint)

```
16 // Ingestion
17 murron_server.NewPipeline().
18     In(MurronGRPC).
19     FilterType(MyEvent).
20     Out(MyEventQueue)
21
22 // Sinks
23 my_event_worker := NewEventWorker()
24 my_event_worker.NewPipeline().In(MyEventQueue).
25     WithRateLimitPerSecond(1000).
26     WithSampleRate(5).
27     Out(SidecarClient)
```

Murron Intelligent Sink

- Auto Backfill
- Schema as a service





Thank You!

For more information go to: slack.com

